



**PLUS** *fit* Acetabular System  
Cementless Cup

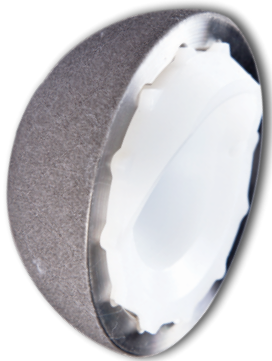


*You can believe in...*

**PLUS** *fit* Cementless Acetabular System is based on the clinically proven design principles & extensively documented results of time tested implants. Certain technical improvements brought about by experience & newer developments in production technology further enhances the exceptional longevity & safety of his system.

## Acetabular Shell

### Acetabular Shell is of Titanium Alloy



- Multi radius profile provides biomechanically optimal pressfit and excellent primary stability.
- Good secondary stability is achieved through rough surface coating of pure titanium of 500 to 700  $\mu\text{m}$ , which ensures good osteointegration.
- Special taper fit mechanism offers firm seating of the polyethylene insert into the cup.
- Optional screw fixation to enhance cup stability.
- Size range: 40 mm to 68 mm.

### Acetabular Insert is of UHMWPE

- Locking mechanism allows liner to resist transverse and tipping forces and minimizes micromotion by providing a secure point of stabilization.
- 20° hooded insert protects against dislocation without significantly restricting the range of motion.
- Acetabular Inserts available to pair with 28 mm / 32 / 36 mm Ball Head

## Acetabular Insert



## Fixation Screws



### Fixation Screws is of Titanium Alloy

- Available in sizes from 20 mm to 30 mm in 2 mm increments